



Cranswick Road, London, SE16 3BH

A generous two bedroom house located in Bermondsey located a walk away from Surrey Quays station and Southwark Park.

The ground floor boasts an open plan reception room and modern kitchen, a dining room with a skylight opening onto the large back garden. The first floor features two spacious double bedrooms with built-in storage, and a stylish family bathroom.

The surrounding area has many local amenities such as restaurants, local café, bar, and train station.

- Generous Two Bedroom House
- Residential Location
- Good Transport Links

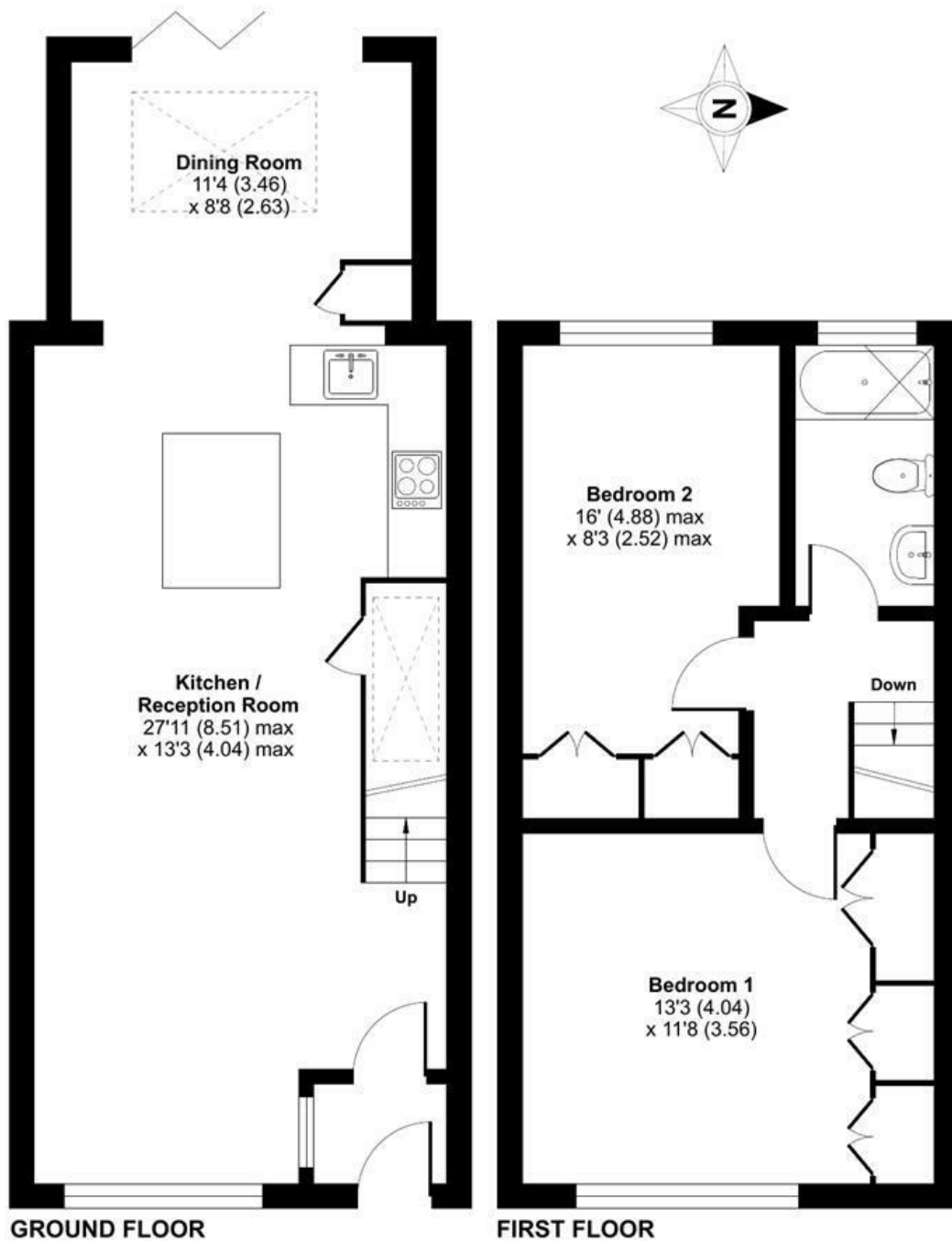
Alex & Matteo
ESTATE AGENTS

£2,500 Per month

Cranswick Road, London, SE16

Approximate Area = 875 sq ft / 81.2 sq m

For identification only - Not to scale



Alex & Matteo
ESTATE AGENTS



Floor plan produced in accordance with RICS Property Measurement 2nd Edition, Incorporating International Property Measurement Standards (IPMS2 Residential). © nitchecom 2025. Produced for Alex & Matteo Estate Agents. REF: 1288400

